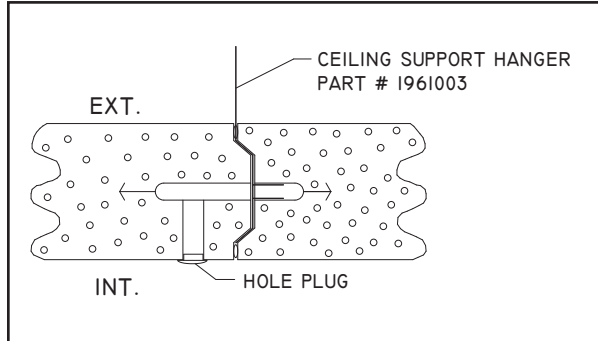


Ceiling Support Details



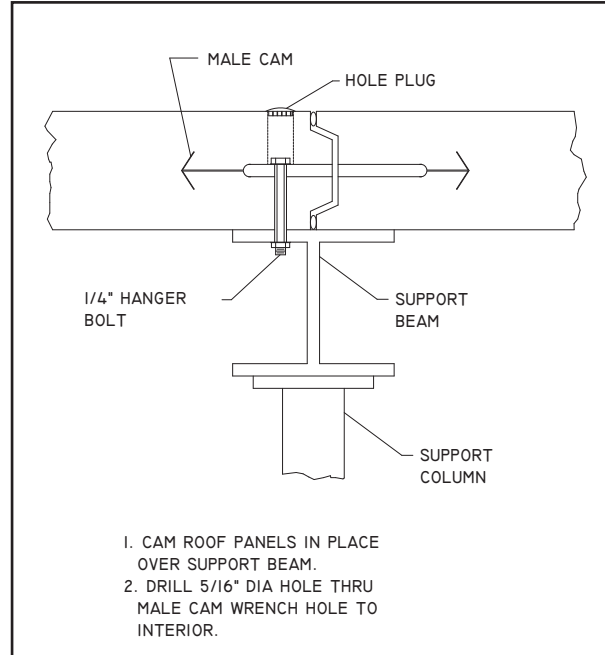
Indoor Installation of Walk-In

When both the length and width of a Leer Walk-In exceed 14' 5½" support for the ceiling panels is required. Listed below are two methods that Leer recommends for ceiling support of a Walk-In cooler or freezer installed indoors.



Roof Suspension System

This system allows you to suspend from an existing roofing system using a heavy metal hanger (Leer provided) that becomes a strong and integral part of the cam-lock device.



Interior Beam Support System

This method supports the Walk-In ceiling from the interior of the box utilizing a steel I-beam with side support posts. The beam is positively fastened to the ceiling using a bolt fastened to the cam-lock device.

Outdoor Installation of Walk-In

When the Walk-In is to be installed outdoors, a number of different design criteria such as size of Walk-In, geographic location, snow load, proximity to adjacent buildings, wind or seismic loads, etc. must be considered. Please contact Leer Customer Service for assistance.